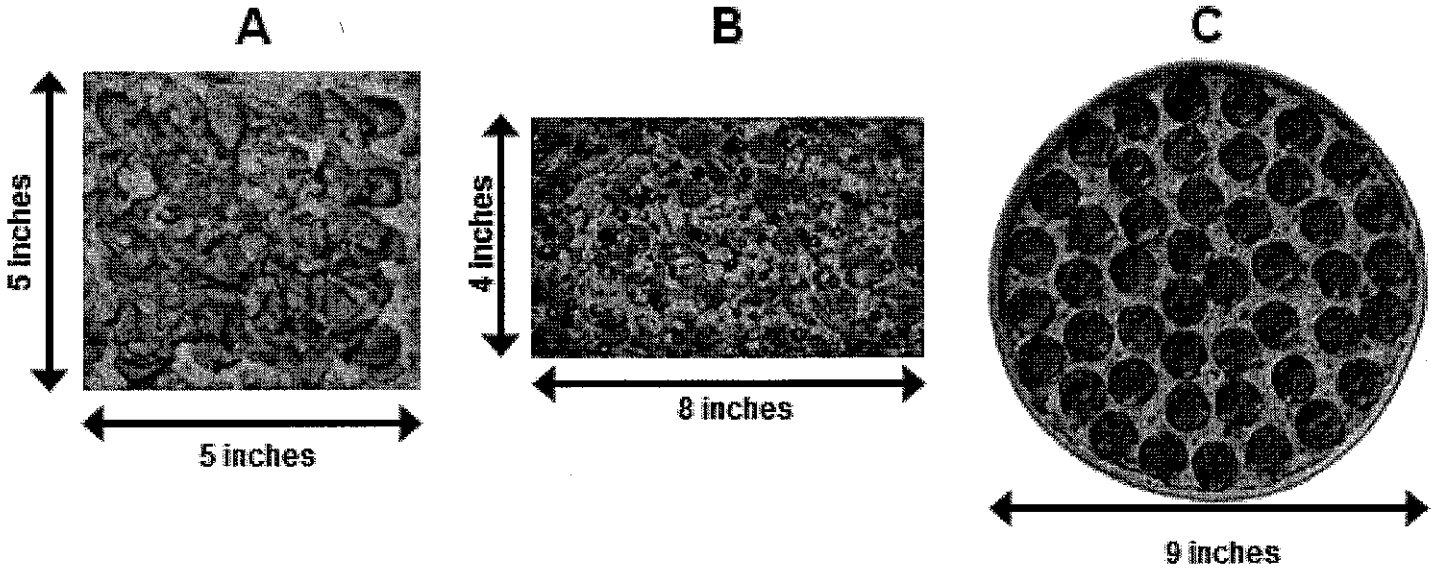


Pizza Crusts



Circumference of a circle: $C = d\pi$

Area of a circle: $A = \pi r^2$

- 1.) How many inches of stuffed crust are put around the edge of each of these pizzas?
You MUST SHOW YOUR WORK!! NO WORK = NO CREDIT!!

Pizza A: _____ inches

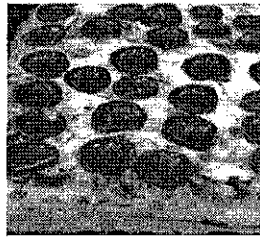
Pizza B: _____ inches

Pizza C: _____ inches

Math 7 Applying Area, Perimeter, & Circumference

Pizza Crust

2.) Here is a square pizza with an area of 36 square inches.



$$A = 36in^2$$

a.) What length of stuffed crust will be around the edge?

b.) Design two rectangular pizzas, each with an area of $36in^2$, with different perimeters, so Robbie will have more crust than on the square pizza above. In each case calculate what the perimeter will be.

Perimeter of Pizza 1: _____ inches

Perimeter of Pizza 2: _____ inches

3.) What is the circumference of a round pizza with an area of $36\pi in^2$?

Explain how you figured this out: