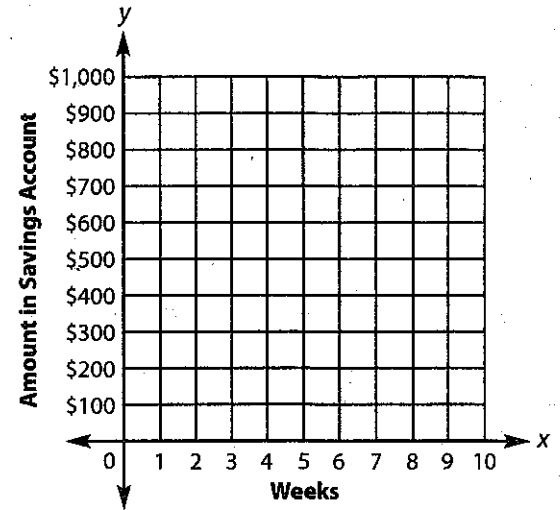


Standard 8.F.5 (M–H)

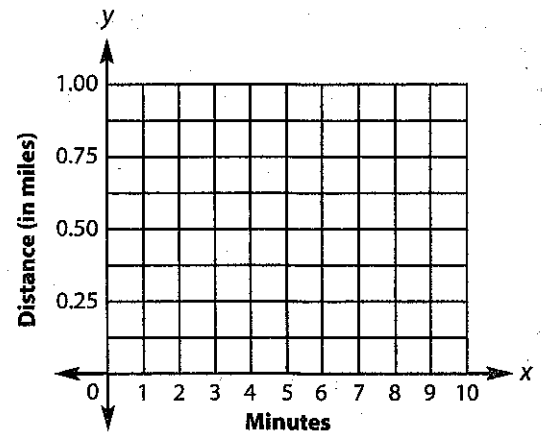
Practice Analyzing Graphs II

A. Directions: On the grids below, draw a graph that matches each description. Label each section of the graph with the corresponding letter from the description.

1. Deidre opened a savings account with an initial deposit of \$200.
 - A. She deposited \$100 per week for 4 weeks.
 - B. Then, Deidre withdrew \$50 per week from her savings account for 2 weeks.
 - C. After that, she went 2 weeks without making any deposits or withdrawals.
 - D. Finally, Deidre began making weekly deposits of \$150.



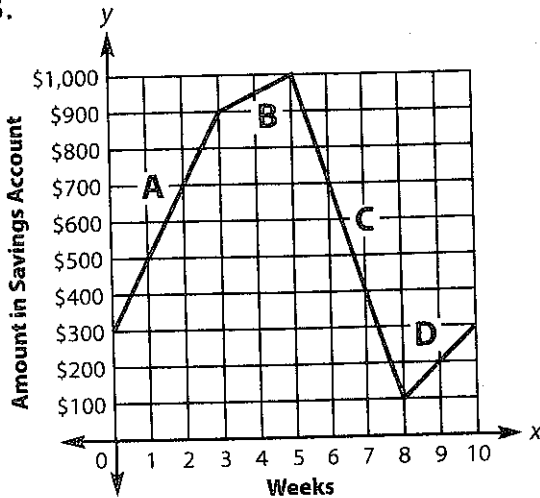
2. James' friend Dave lives 1 mile down the street from James.
 - A. James walked toward Dave's house at a constant rate for 4 minutes.
 - B. Then, James turned around and walked back toward his house at a constant rate for 2 minutes to pick up something he dropped.
 - C. Before continuing toward Dave's house, James stopped for 1 minute to retie his shoe.
 - D. James ran the rest of the way to Dave's house at a constant rate, and arrived 10 minutes after he left his house.



continue to next page

B. Directions: Look at each graph below. Write the steps that could result in each section of the graph.

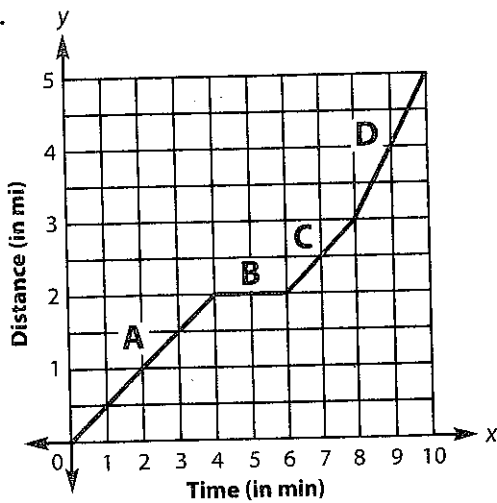
3.



Brady opened a savings account with an initial deposit of \$300.

- A. _____
- _____
- B. _____
- _____
- C. _____
- _____
- D. _____
- _____

4.



Simone drove from her house to the grocery store, which is 5 miles from her house.

- A. _____
- _____
- B. _____
- _____
- C. _____
- _____
- D. _____
- _____